

DECOR TRENDS

INDUSTRY
2022

MADE IN GERMANY

MAKE
YOUR
VISIONS
WORK.

LIVING TRENDS
ACCELERATED
BY THE PANDEMIC

REDUCED TO THE MAX
RETURN TO THE ESSENTIAL



BACK TO THE FUTURE
FREEDOM & FRESH INTERIOR FURNISHING IDEAS

THE WAY WE LIVE IS UNDERGOING RADICAL CHANGES

A clear paradigm shift with regard to the way we live is apparently imminent, reinforced by the pandemic: The 2022 home trends are still defined by social cocooning – retreating to your own four walls – and the seamless integration of working environments into homes due to being forced to work from home. People’s homes are generally becoming even more important to them: They are not only continuing to invest in new kitchens or a new bathroom as an oasis of wellness in their own home but also increasingly into ergonomically furnished office spaces, and therefore into the redesign of their living rooms.

What people want from this “new way of living” differs from person to person: A functional interior is particularly important to people who have to balance their family life with working from home. Others stage their home as a place for relaxation and socialising. In addition, living spaces are becoming increasingly smaller – which calls for well thought out solutions for small spaces.

We offer the right design ideas for any living concept – with sophisticated decors and textures, high-quality and durable materials, a wide range of combination options as well as tailor-made functional features. Besides new decors and textures, we are also addressing the themes that are currently popular in the market. Many successful decors with sophisticated designs from the past three years still deserve consideration and are extremely trendy. Using existing resources is also a form of sustainability.

On the following pages, we offer you a wide range of inspirational ideas for designing individual living environments.

MAKE YOUR VISIONS WORK.

CURRENTLY POPULAR THEMES

Pale woods	4
Lively woods	8
Crown cut oak	12
Striped oak	16
Fruit & nut	20
Ash, elm & chestnut	21
Softwoods	22
Distressed look / upcycled	26
Mosaic / intarsia	27
Metal	28
Textile	38
Black	42
Concrete’s successor	43
Terrazzo	44
Slate	45
Expansive stones	46
Marble	50

SENSE & SENSIBILITY
ENJOYING HOME



HOME COUNTRY
TOGETHER
WITH FRIENDS
& FAMILY



NEW URBAN LIFE
LITTLE ROOM, MAXIMUM
FUNCTIONALITY



PALE WOODS



R27065
Arlington Maple



R36025
Brushed Alnus



R34027
Sliced Ash Natural



R38017
White Brushed Acacia



R24054
Lindstrom Beech Light



R34023
Portland Ash Light



R38002
Acacia



R27060
Agostino Maple



R27044
Norway Maple



R50094
Nordic Teak

All decors available as HPL and DecoBoard.

R27065 ARLINGTON MAPLE



Repeat Pattern R27065

The particular charm of this lively, pale maple decor with full crown cut sections lies in the varied interplay between colours that range from shades of peach to grey. Ideal for designing expansive open spaces and large areas. Adds a light, natural look to furniture fronts, carcasses and worktops. Warm shades of grey and muted hues of blue reflect the interplay of colours in the maple in a well-balanced way; it can also be combined with neutral-coloured textile decors and understated materials such as ceramics.

R27065 Arlington Maple

LIVELY WOODS



R20391
Nutmeg Bijoux Oak



R20348
Oiled Oak



R22239
Riva Oak



R20038
Natural Chalet Oak



R20315
Artisan Oak



R20382
Bijoux Oak



R20380
Moirée Oak



R20285
Wilton Oak Reed



R20378
Artisan Oak White



R20409
Grey Artisan Oak

All decors available as HPL and DecoBoard.

R20409 GREY ARTISAN OAK



R20409 Grey Artisan Oak

The lively look of this decor, with knots, clearly defined crown cut sections and splits that are rich in contrasts make **Grey Artisan Oak** look like a characterful oiled solid wood. Perfect for carcasses, understated rustic furniture fronts and robust worktops. Bold shades of grey, blue and red vividly contrast this light oak. Combinations with monochrome plaster and concrete decors exude calm.



Repeat Pattern R20409



Repeat Pattern R20391

Nutmeg Bijoux Oak is a striking decor with dark pores, knots, splits and knot-holes. The latter have been upgraded with zinc. This decor is particularly suitable for the design of expansive areas, for example on furniture fronts, tables, counters and worktops. Combinations with warm browns and greys emphasise its colouring. Neutral, brushed metals as well as leather are also good combination partners to round off the look in a characterful way.

R20391 NUTMEG BIJOUX OAK



R20391 Nutmeg Bijoux Oak

CROWN CUT OAK



R20410
Maryland Oak



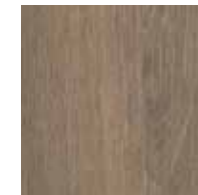
R20284
Wilton Oak White



R50083
Silver Wenge



R20256
Lorenzo Oak



R20286
Italian Oak



R20381
Auerbach Oak

All decors available as HPL and DecoBoard.

R20410 MARYLAND OAK



A light, friendly oak decor that looks particularly natural due to its lively grain and subtly nuanced shades between a reddish brown and grey. Fine details such as contrasting knots and splits develop their full impact particularly well on fronts and horizontal areas in kitchens and bathrooms. Warm shades of beige, brown and greige as well as pastel shades of blue work very well with this light oak and create an overall well-balanced look. Striking, dark steel decors or understated textile decors are other suitable combination partners.



Repeat Pattern: R20410

R20410 Maryland Oak

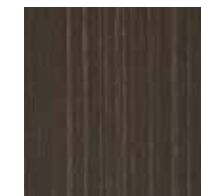
STRIPED OAK



R20404
Dark Aberdeen



R20403
Light Aberdeen



R34019
Sliced Ash



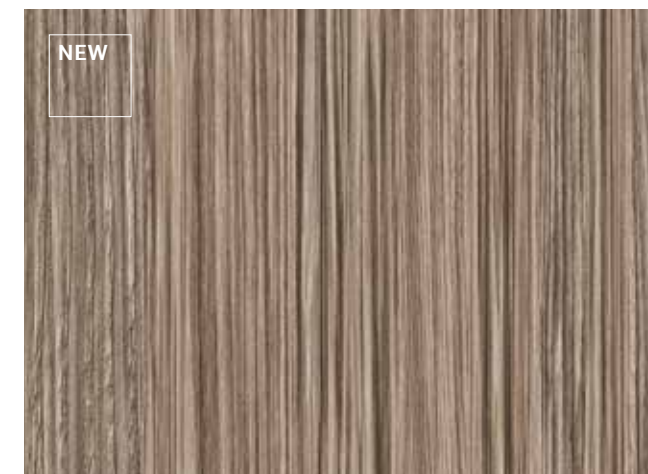
R20234
Dark Springfield Oak



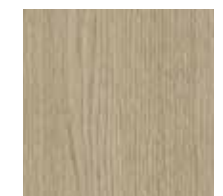
R20233
Light Springfield Oak



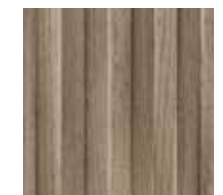
R34027
Sliced Ash Natural



R48054
Limerick



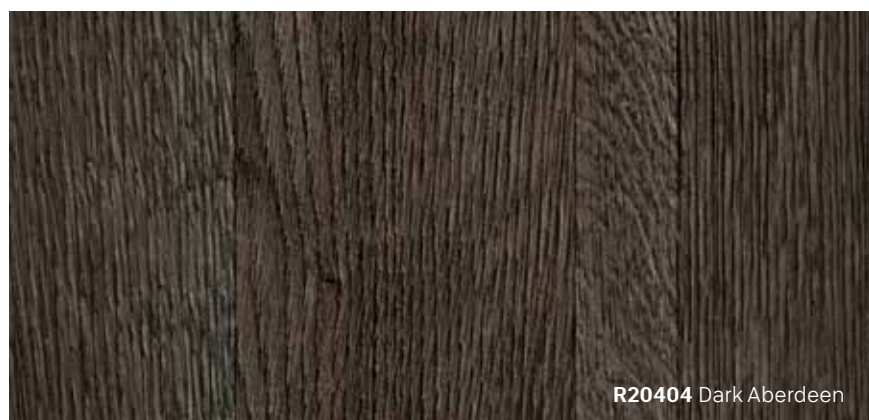
R20383
Pure Oak



R20384
Chester

All decors available as HPL and DecoBoard.

R20403 LIGHT ABERDEEN
R20404 DARK ABERDEEN



R20404 Dark Aberdeen



Repeat Pattern R20404



R20403 Light Aberdeen

Contemporary and full of character: With its dark pores and brushed-looking surface, this oak decor is eye-catching. The straight grain looks stylish and sophisticated, and adds an unusual touch to kitchens and bathrooms as well as offices. A good combination partner for **Dark Aberdeen** is a white with fresh, light hues of blue; velvety shades of brown as well as light, calm stones are other suitable options. **Light Aberdeen** goes well with soft, powdery plain colours and shades of violet, as well as black, textured metals and light stones.

R48054 LIMERICK



R48054 Limerick



Repeat Pattern R48054

A decor that tells stories: With its striped, natural-coloured design and lively grain, **Limerick** fires the imagination. An unusual solution for carcasses and fronts, and also suitable for distressed looks. Particularly beautiful in combination with a plain dark blue green or fresh green, or a neutral dark grey. Understated textiles and warm metal shades are also perfect combination partners.

FRUIT & NUT



ASH, ELM & CHESTNUT

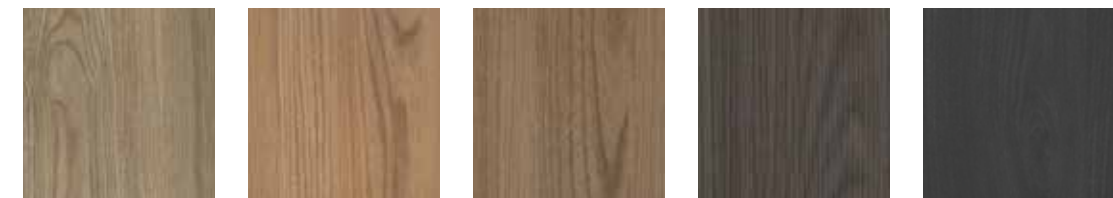


R42056 Toulouse Cherry
R42006 Havanna Cherry
R42033 Scandic Cherry Light
R30135 Okapi Walnut



R48042 Lumumba
R50095 Laos Teak
R50088 Malaysia Teak
R38000 Chestnut

All decors available as HPL and DecoBoard.



R34022 Ash Firenze Dark
R37016 Salisbury Elm Natural
R37017 Salisbury Elm Grey
R34024 Portland Ash Dark
R34032 Portland Ash Black



R34033 Mountain Ash
R34015 Ladoga Ash Dark
R34023 Portland Ash Light
R34026 Zen Ash Light

All decors available as HPL and DecoBoard.

SOFTWOODS



R55022
Suomi Pine Grey



R55025
Baltico Pine White



R55006
Fano Pine White



R55001
Navarra Pine



R55085
Nordic Pine



R55032
Bodega Grey



R55083
Amberwood



R55008
Natural Alpine Spruce



R55084
Appenzell Spruce

All decors available as HPL and DecoBoard.

R55022 SUOMI PINE GREY



With its striking grain and cool, Nordic-looking soft shades of grey and blue, **Suomi Pine Grey** exudes warmth as well as a cosy homeliness on carcasses, fronts and worktops. Suitable combination partners are understated materials such as ceramics or limestone and neutral textile decors; cool shades of grey and blue go perfectly with the pine's range of colours.



DISTRESSED LOOK / UPCYCLED



MOSAIC / INTARSIA



R55072
Willow White



R48051
Patula Cream



R55073
Sand Pine



R55004
Ponderosa Pine



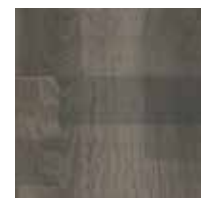
R48043
Chip



R35006
Grey Klondike



R20347
Saloon



R48036
Flintwood



R20351
Flamed Wood

All decors available as HPL and DecoBoard.



R20349
Tangram Oak



R48052
Garbo



F79025
Map



S68027
Roman Mosaik Grey

All decors available as HPL and DecoBoard.

METAL



All decors available as HPL and DecoBoard.

F76158 ALUX GOLD
 F76159 ALUX CAVIAR
 F76160 ALUX CHAMPAGNE

MARKET THEME METAL



F76158 Alux Gold

Elegant understatement in its most beautiful form: The matt, textured anodised aluminium surface impresses with a sophisticated feel to the touch and a soft mother-of-pearl sheen. Available in warm, friendly golden, bronze and stainless steel coloured versions, Alux is perfect for the realisation of entire interior design concepts.

All three decors are also perfect combination partners for very light, plain colours as well as dark, lively woods. Soft, powdery plain colours and woods with nuances in antique pink shades enrich the subtle interplay between the warm nuances of grey in **Alux Champagne**. A perfect companion for **Alux Gold** and Champagne is dark marble, whilst **Alux Caviar** goes very well with light stone and bright shades of orange.



F79028 BRONZE PIQUEE



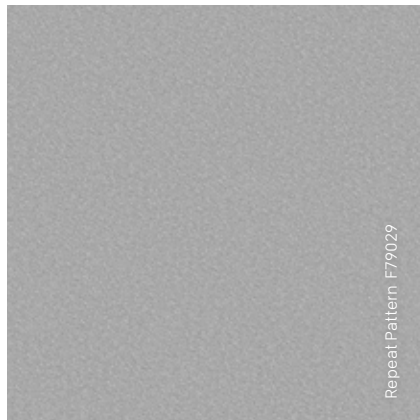
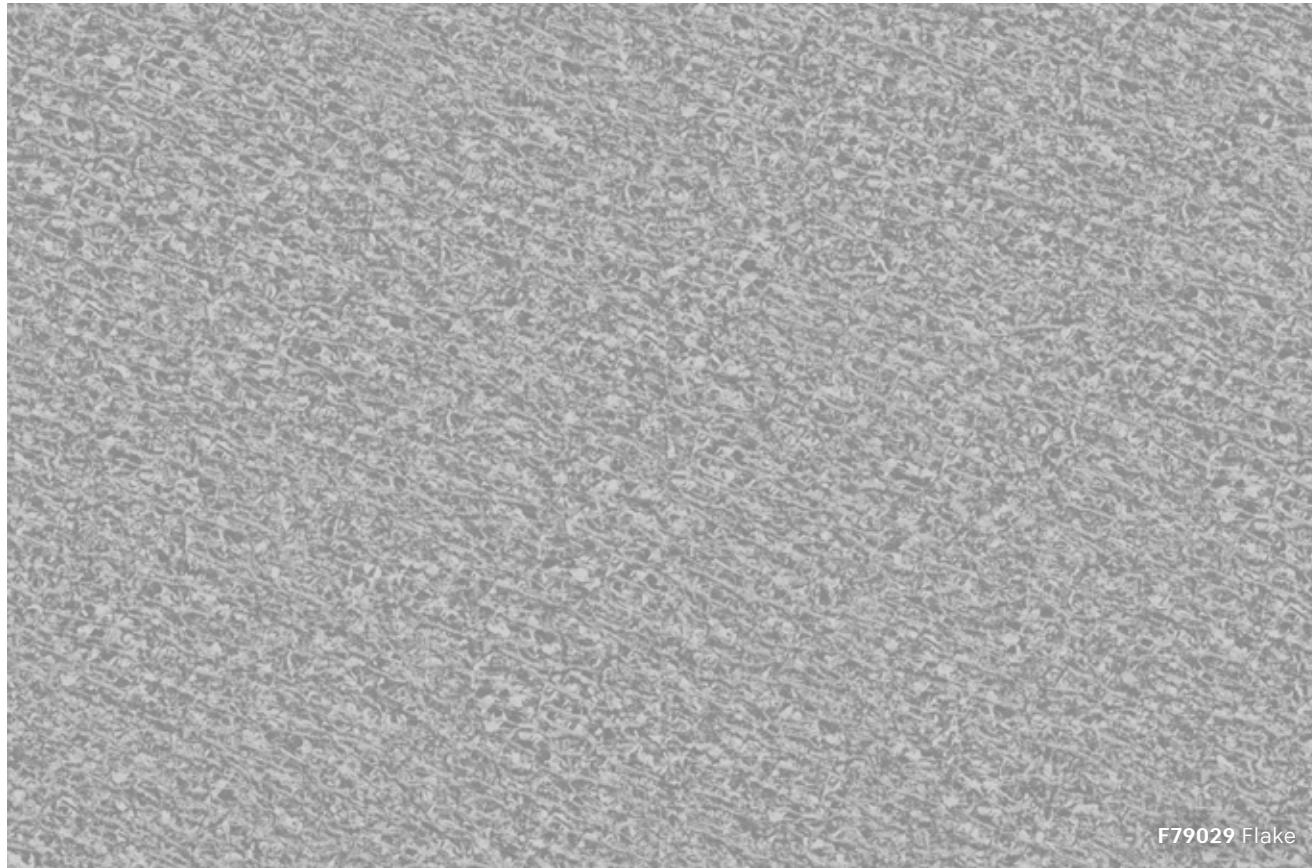
The unusual effect of this unique metal decor lies in the combination of an even diagonal pique texture with an understated mother-of-pearl effect with a cloudy sheen. The warm bronze shade comes into its own particularly well on large areas. Perfect in combination with airy, cool plain blue and green-blue colours, warm shades of brown and lively, striking woods.



Repeat Pattern F79028

F79028 Bronze Piquee

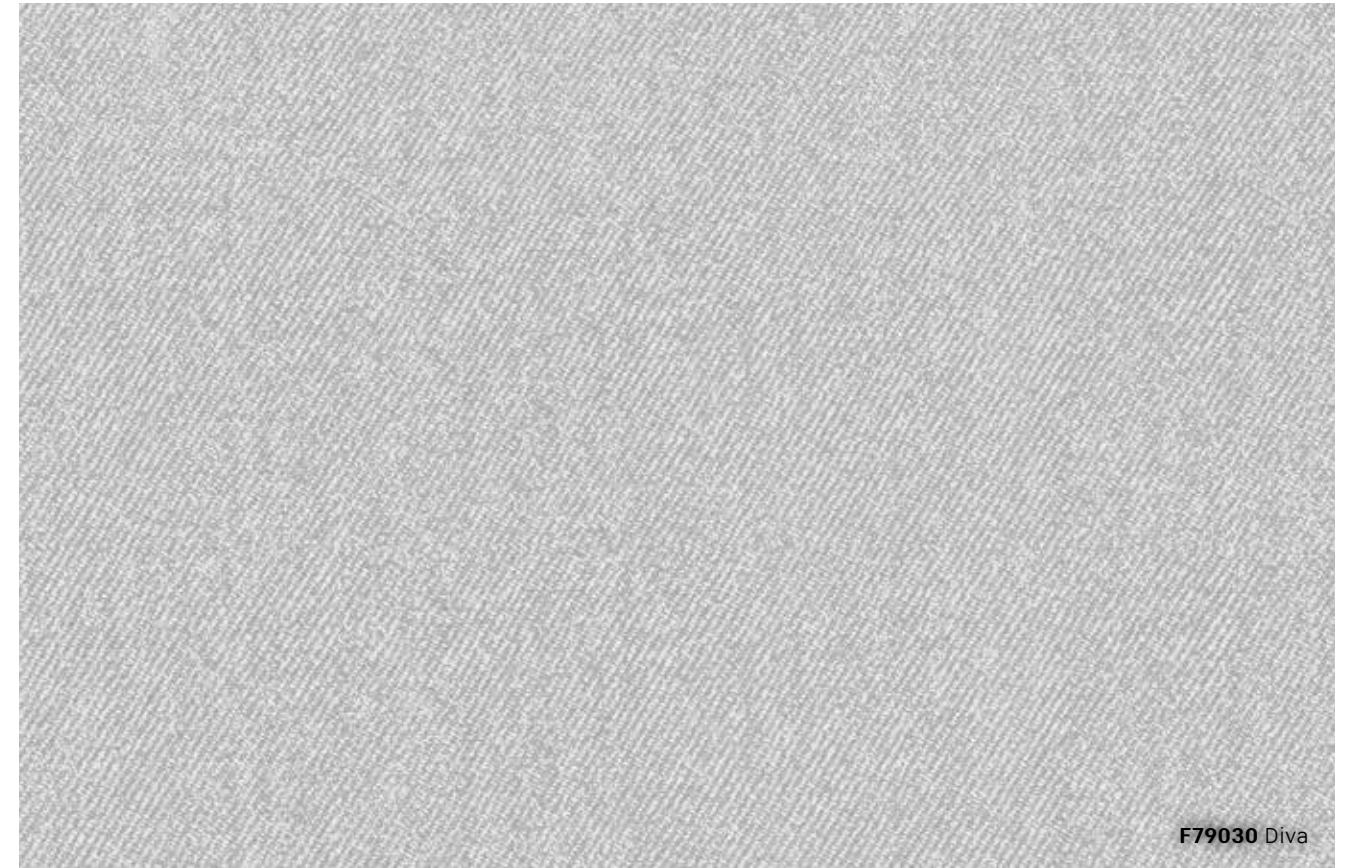
F79029 FLAKE



As light and airy as fresh snowflakes: With its oscillating mother-of-pearl coating, this cool silver shade creates an impressive, iridescent metal effect that upgrades any surface. It looks just as good combined with white and warm, dark shades of brown and dark and bold shades of blue as it does combined with warm dark woods and monochrome, dark plaster or concrete decors.



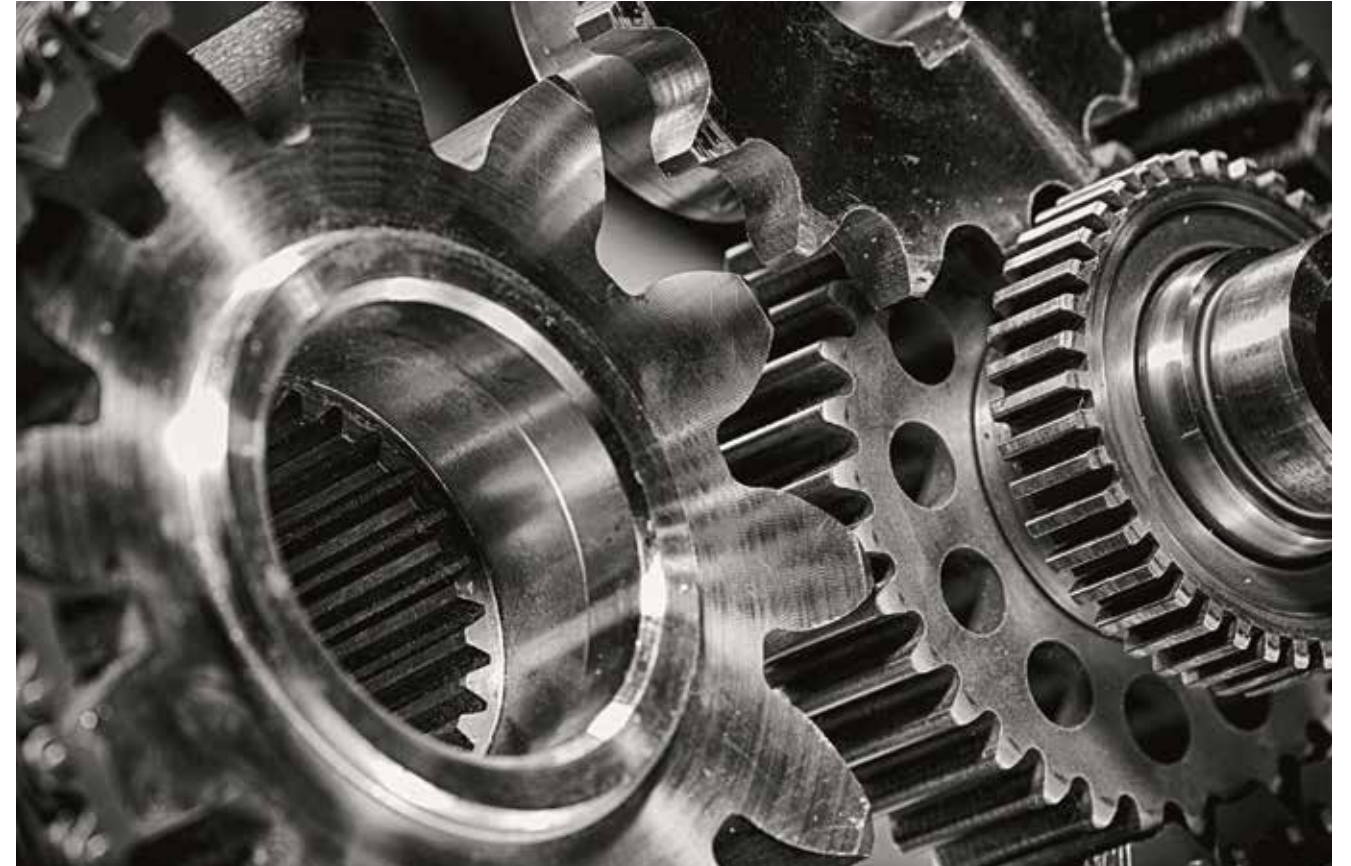
F79030 DIVA



Clean and timeless – a high-quality metallic decor that meets the most discerning standards. With its silver textile texture and mother-of-pearl sheen, it celebrates making a statement. Looks particularly impressive on vertical areas. Recommended combination partners are pastel blue, neutral grey and anthracite, as well as warm shades of brown. Combining this decor with dark stone and dark wood creates elegant contrasts.



NEW TEXTURE STEEL MATT



Almost like brushed stainless steel. The new DST texture **Steel matt** for the product systems HPL and DecoBoard looks very authentic. Exquisite and extremely matt, it impresses both in terms of look and feel.

Steel matt adds a metallic upgrade to any plain colour as well as many expansive mother-of-pearl decors. The fine, sharp-edged polish softly reflects the light and adds an unobtrusive, elegant shine.

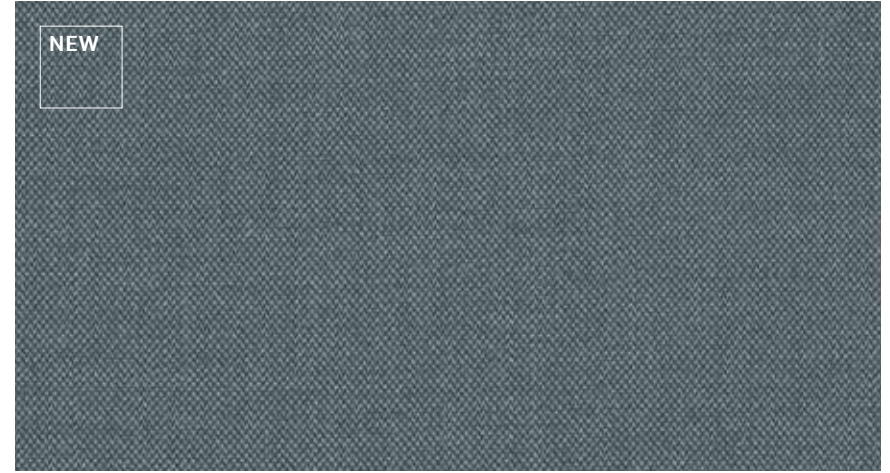
The new brushed metal texture Steel Matt is recommended for vertical use. It is available in the format 4100 x 1300mm for HPL and 2655 x 2100mm for DecoBoard.



TEXTILE



NEW



F76157
Jacob Blue



F73051
Texwood White



F73036
Suit Grey Light



F76014
Platinum Grey Twist



F79016
Caroline



F76117
Piquée Grey Blue



F79023
Patchwork



F76154
Tweety



F76099
Loden Green

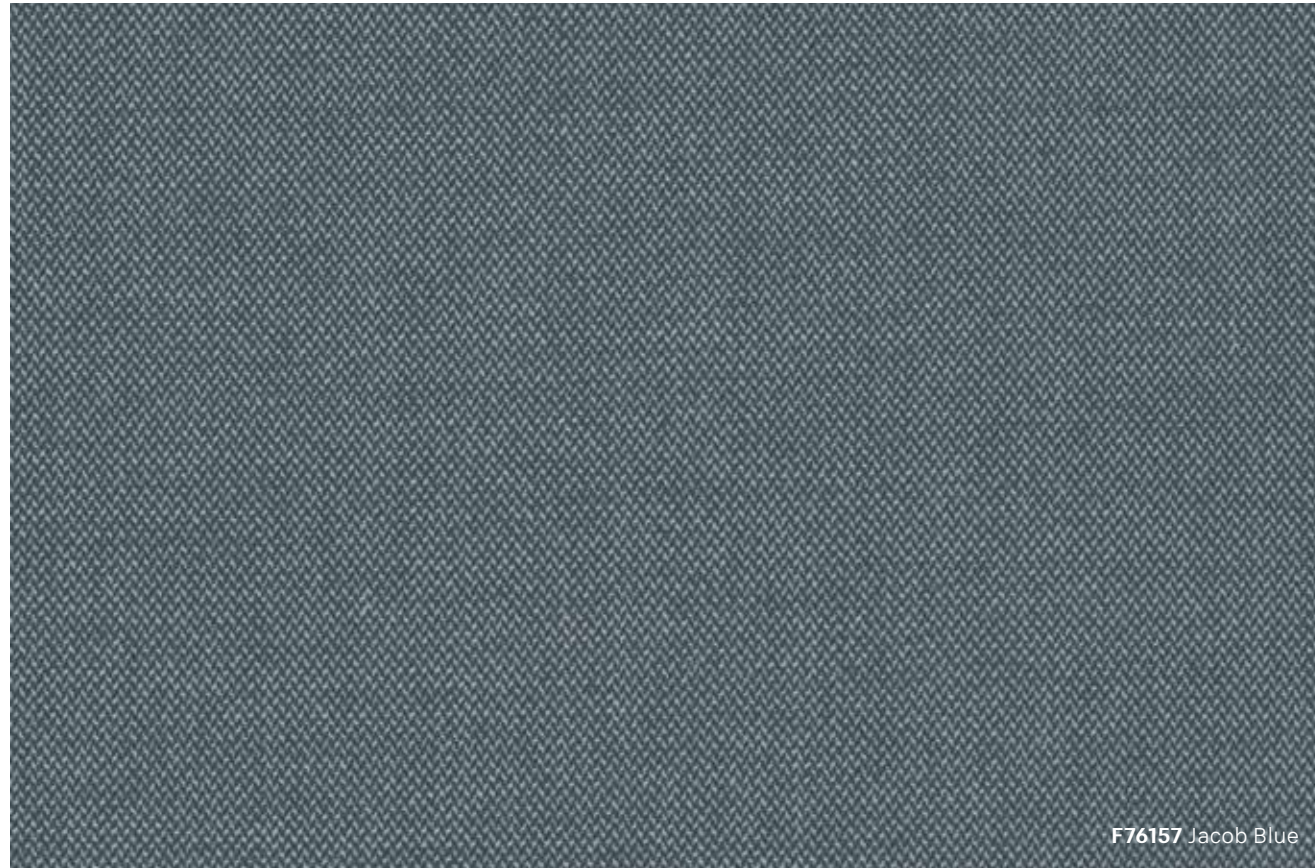
NEW



F79031
Jungle Blue

All decors available as HPL and DecoBoard.

F76157 JACOB BLUE



F76157 Jacob Blue



Repeat Pattern F76157

Makes a good impression wherever it is used: This three-dimensional textile decor with an Oxford pattern in the trendy shade of "Dive deep" blue basically creates the ideal background on any large area for staging detailed interiors spectacularly, but also tastefully. Perfect in combination with shades of beige, brown and greige. Combinations with pale, warm woods and stones that are low in contrasts emphasise the cosy atmosphere.

F79031 JUNGLE BLUE



F79031 Jungle Blue



Repeat Pattern F79031

Nature can be so calming – like the foliage on this decor in the attractive shade of blue "Dive deep". With its generous design and the nuanced shades between blue and white, **Jungle Blue** is an optimum choice for extravagant furniture fronts or sliding doors. This jungle decor can be combined with light to dark shades of blue with a slight hint of green as well as warm, pale woods or black metal.



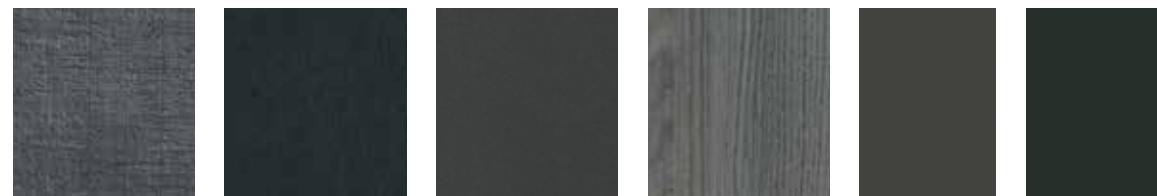
BLACK



CONCRETE'S SUCCESSOR



R34032 Portland Ash Black
F73050 Texwood Black
F76111 Kito Steel
F70014 Anthracite Metallic
U12000 Volcanic Black
U18028 Blue Black
U12215 Anthracite



F76149 Kex
F76141 Alux Black
F79934 Ferro Black
R20320 Silver Oak
U12233 Metallic Black
U19011 Black Green

All decors available as HPL and DecoBoard.



F73075 Solidale
S68036 Cento
F76145 Tazio



F73076 Solidale Blue
F76142 Terracotta
F76149 Kex

All decors available as HPL and DecoBoard.

TERRAZZO



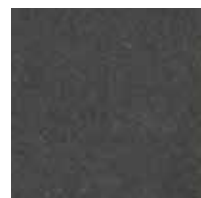
SLATE



F79027
Shell Grey



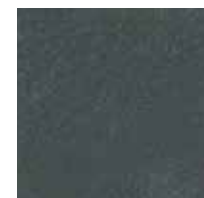
F79026
Shell Sand



S68034
Espresso



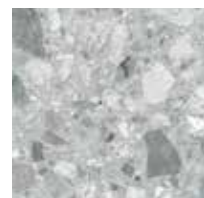
S68050
Calypso



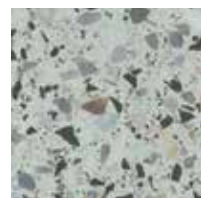
S68029
Terrazzo Nero



S68036
Cento



S63035
Trebbia Stone



S68048
Abruzzo Colore



S68049
Abruzzo Naturale



S68039
Terrazzo Classico Black

All decors available as HPL and DecoBoard.



S64012
Tibet



F76142
Terracotta



S64011
Deep Slate



S64007
Light Garnet Slate



S64008
Dark Garnet Slate

All decors available as HPL and DecoBoard.

EXPANSIVE STONES



S68056
Jupiter Sand



S62034
Savolinna



S60019
Crick



S68054
Limestone



S68013
Black Limestone



S61034
Beola Grigia



S68057
Jupiter Moon

All decors available as HPL and DecoBoard.

S68056 JUPITER SAND



S68057 JUPITER MOON



Terrazzo-like stone with a mother-of-pearl print with a characterful texture and a high-end metal effect: With its sand-coloured background, **Jupiter Sand** creates a warm ambience, whilst the grey background of **Jupiter Moon** looks quite understated and goes extremely well with stronger decors. Both decors come into their own particularly well on horizontal areas or entire cubes.

The stone decor can be combined with light, monochrome metals with very elegant results. Jupiter Sand also goes beautifully with deep black or bold, rich and fresh plain colours. In combination with dark, grey woods, it exudes plenty of calm thanks to their sophisticated look. Jupiter Moon goes perfectly with calm, warm shades of brown and soft shades of green, or dark, striking woods.



MARBLE



NEW



S63063
Botticino



S63045
India White



S63044
Caviar Black



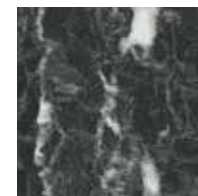
S63033
Light Cortona



S63021
Breccia Paradiso



S63007
Oriental Stone Brown



S63028
Nero Portoro



S62025
Corniglia



S62032
Obelisk Grey



S63027
El Greco



S68025
Kings Marble Green



S63058
Grey Blue Cracked Marble



S63056
Greige Cracked Marble



S63059
Marmor Larsos

All decors available as HPL and DecoBoard.

S63063 BOTTICINO

Refreshingly understated: A marble with cool nuances of grey and fine white veins that run dynamically into all directions. Ideal for staging larger horizontal and vertical areas in a room in a particularly impressive way. Looks very well-balanced in combination with airy and light shades of blue or neutral grey. Monochrome metals as well as pale Nordic woods are also good combination partners; bold, dark shades of red match the random red-brown veins in the marble.



Repeat Pattern S63063

S63063 Botticino

TREND DECORS 2022

8 WOOD DECORS



R27065 Arlington Maple



R48054 Limerick



R20391 Nutmeg Bijoux Oak



R20403 Light Aberdeen



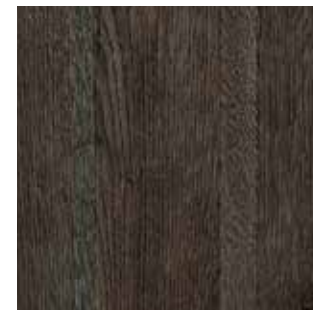
R20410 Maryland Oak



R55022 Suomi Pine Grey



R20409 Grey Artisan Oak



R20404 Dark Aberdeen

2 MATERIAL DECORS



F76157 Jacob Blue



F79031 Jungle Blue

3 STONE DECORS



S63063 Botticino



S68057 Jupiter Moon



S68056 Jupiter Sand

6 METAL DECORS



F76158 Alux Gold



F76159 Alux Caviar



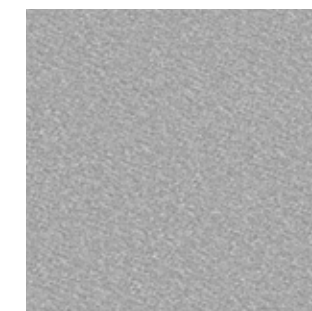
F79030 Diva



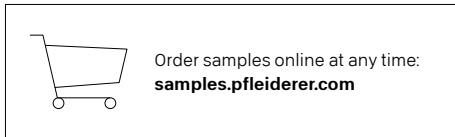
F76160 Alux Champagne



F79028 Bronze Piquee



F79029 Flake



Decor Scanner
workapp.pfleiderer.com



© Copyright 2022 Pfleiderer Deutschland GmbH.

This information is issued with great care. We do not however accept any responsibility for the accuracy, completeness and timeliness. There may be slight colour differences between the printed brochure image and the actual design.

Due to the continuous development and modification of our products, possible changes to the relevant standards, laws and regulations, our technical data sheets and product documents expressly do not represent a legally binding guarantee of the properties specified therein. In particular, no suitability for a specific purpose can be derived from this information. It is therefore the personal responsibility of the individual user to check the processing and suitability of the products described in this document for the intended use and to take into account the legal framework and the current state of the art. Furthermore, we expressly refer to the validity of our general terms and conditions.

You can find our general terms and conditions on our webpage: www.pfleiderer.com

Pfleiderer uses wood from Certified Sustainable Forest Management.



MADE IN GERMANY

Good to know: the Pfleiderer quality promise.

Pfleiderer wood-based panels stand for quality without compromise. We use sustainable raw materials and state-of-the-art production processes and we are fully committed to our site in Germany. For more information, visit quality.pfleiderer.com.

Pfleiderer UK Limited · Greenway House · Larkwood Way · Tytherington Business Park · Macclesfield · Cheshire SK10 2XR · England
Tel.: +44 (0) 16 25 660 410 · info@pfleiderer.co.uk · www.pfleiderer.com

Pfleiderer Deutschland GmbH · Ingolstädter Straße 51 · 92318 Neumarkt · Germany
Tel.: +49 (0) 91 81 / 28 480 · Fax: +49 (0) 91 81 / 28 482 · info@pfleiderer.com · www.pfleiderer.com